

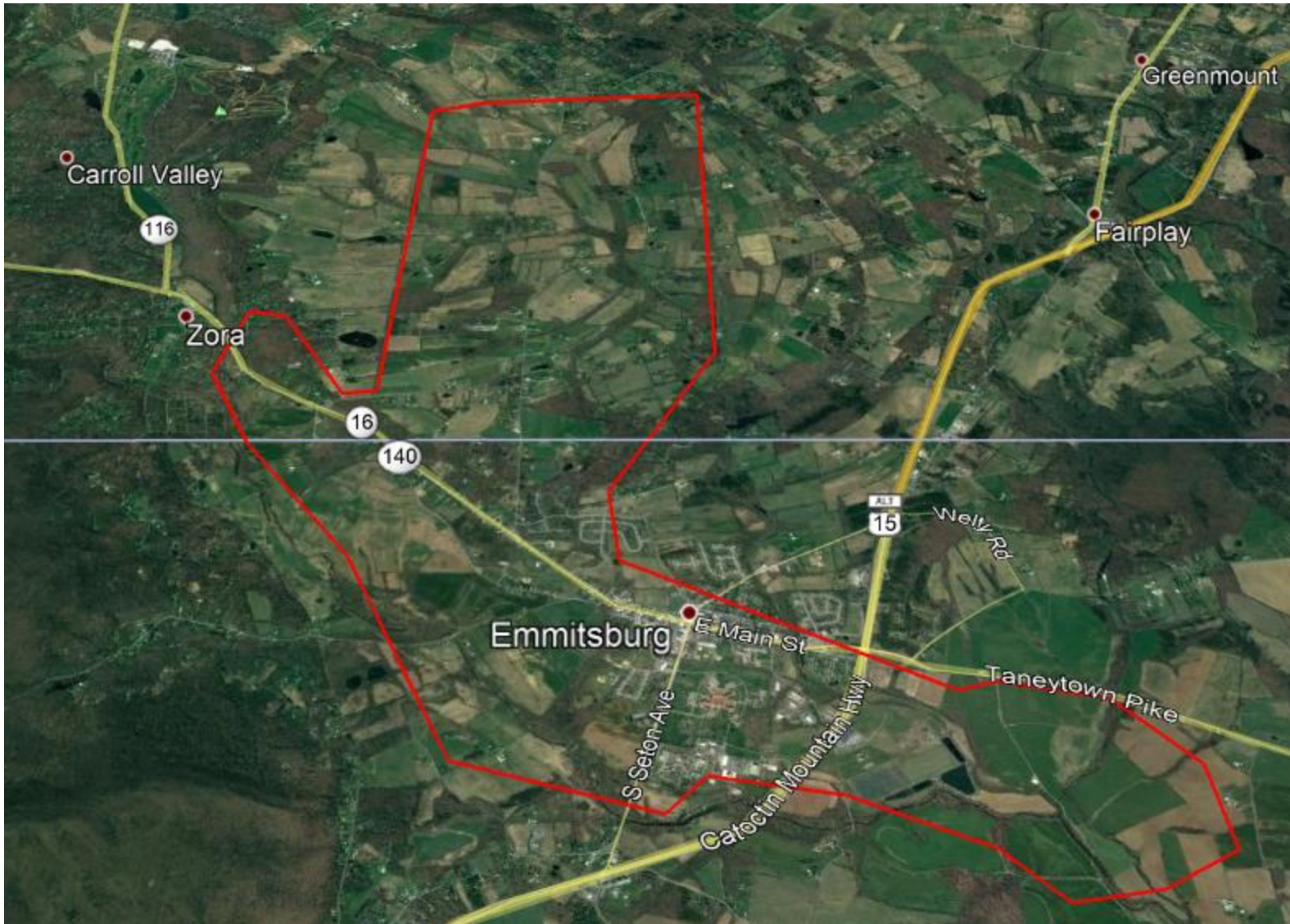
# Carrollsburgh

1735

Frederick Co. MD. & Adams County PA.

Carrollsburgh tract (5000 acres) located in northern Frederick County MD. and southern Adams County PA. was patented to Charles, Mary and Elinor Carroll in 1735. The land was left to the children of Daniel Carroll (Duddington Manor) who died in 1735 in Prince Georges County MD. At the time of the survey the boundary line between Maryland and Pennsylvania was still in dispute. In 1757 Charles Carroll deeded the land in two parts to Samuel Emmit and William Cochran. The part sold to Samuel Emmit includes present day Emmitsburg. If you look closely some the old boundary lines are still visible.

**Note: Boundary lines are approximate**



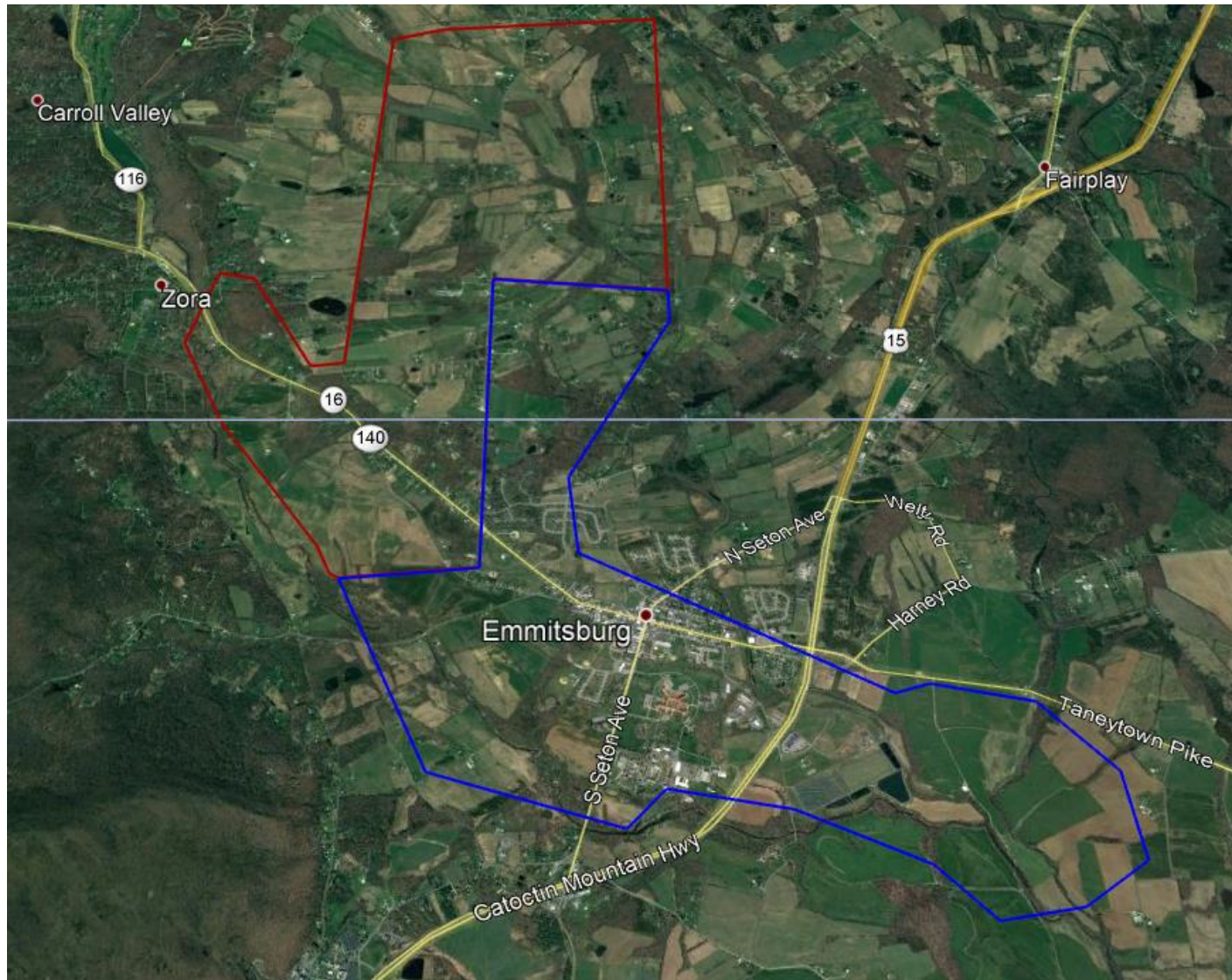
Carrollsburgh

Charles, Mary & Elinor Carroll

8 August 1735

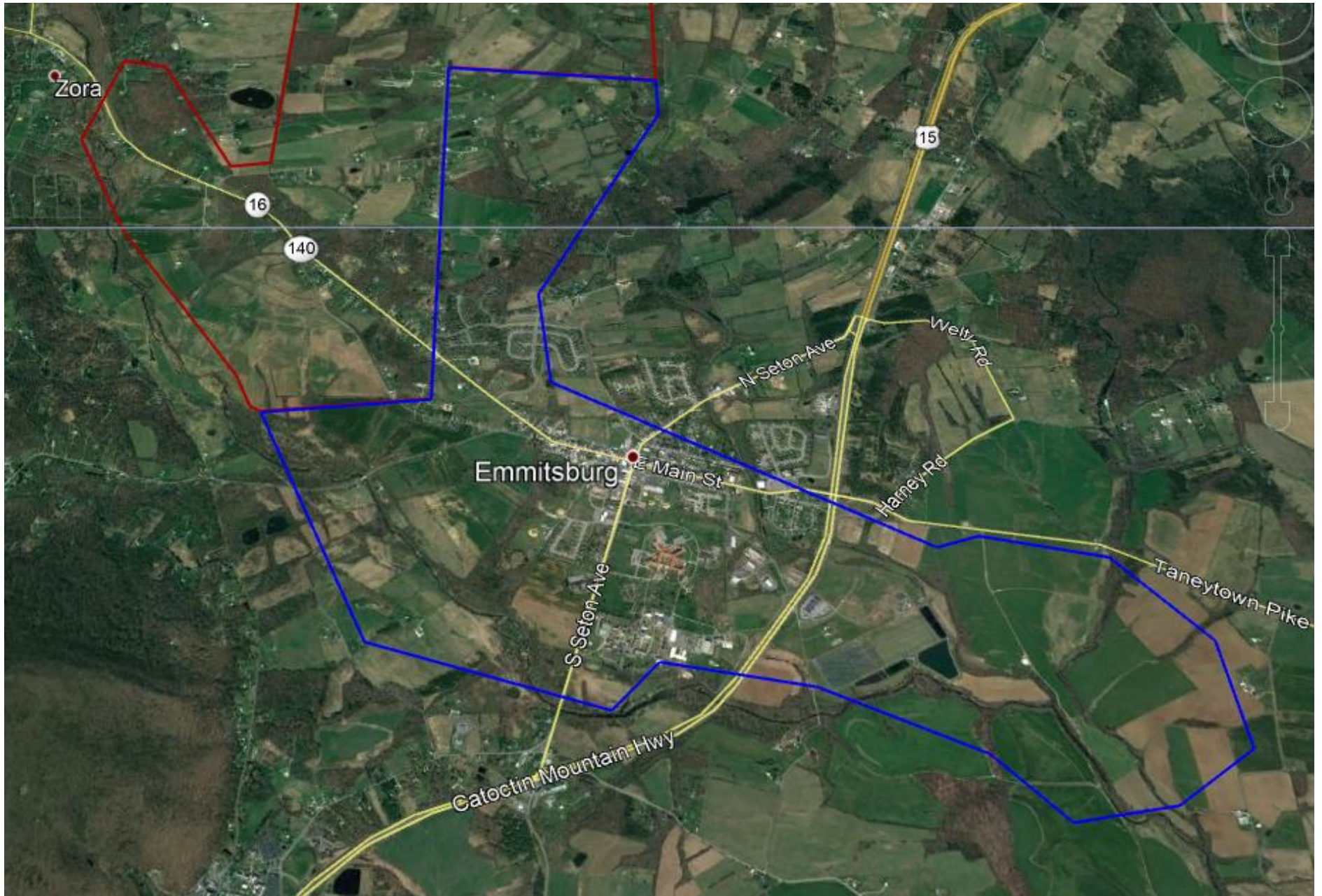
PG Co. Patent# 444/5000 Acres





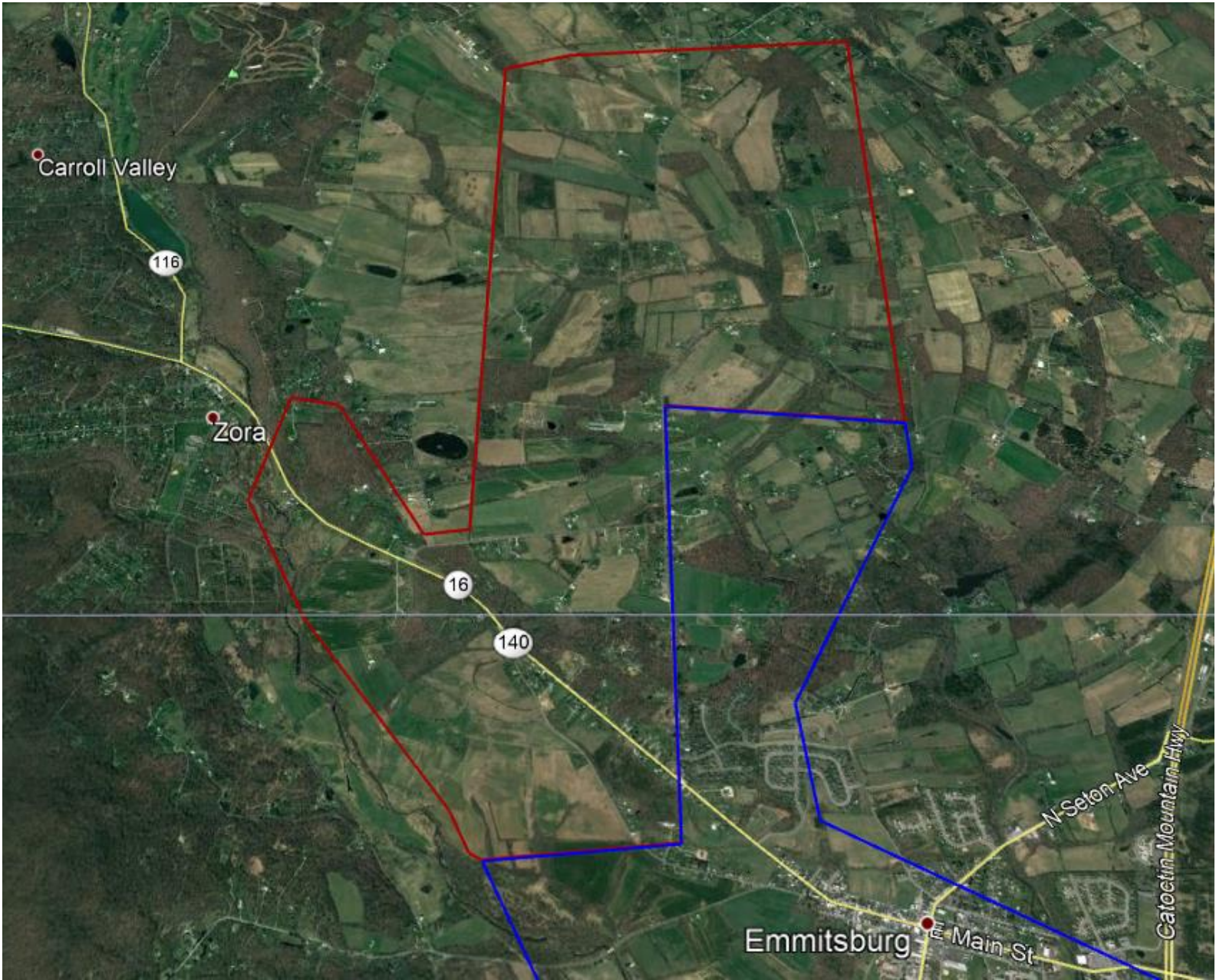
Samuel Emmit (Blue) 13 May 1757 Fr. Co. Deed F-237 2250 acres from Charles Carroll  
William Cochran (Red) 19 May 1757 Fr. Co. Deed F-239 2750 acres from Charles Carroll





Samuel Emmit (Blue) 13 May 1757 Fr. Co. Deed F-237 2250 Acres





William Cochran (Red) 19 May 1757 Fr. Co. Deed F-239 2750 Acres